

## **Announcement of Integrated App for Multiple Environment Sensors and Start of Sales of New Model —Improved convenience with primary diagnosis using a common app! Enhanced temperature and humidity measurement performance—**

Nissin Electric Co., Ltd. has developed an integrated display and setting app common to all models in the “Multiple Environment Sensor” series, which visualizes the installation environment of electrical equipment. The company has also developed a new model “MES-61” with improved temperature and humidity measurement performance and will start sale of this model as an upwardly compatible product.

This is a business activity that contributes to one of the six growth strategies in the Nissin Electric Group Medium-to-Long-Term Business Plan VISION2025, “Adoption of DX to products and business.”

Nissin Electric is expanding its lineup of multiple environment sensors by adding measurement items, including temperature, humidity, vibration, dust and corrosion. Conventionally, a separate app had to be used to display the sensing data and control the sensor settings for each model. In addition, there were requests from customers for the addition of a diagnostic function to use the sensing data for maintenance.

The newly developed integrated app has not only improved the convenience of data display and device setting for all models with a single app, but also has been equipped with an additional primary diagnostic function to determine equipment conditions based on measured sensing data results. This will help our customers further utilize data and increase equipment maintenance efficiency.

The MES-61 is an enhanced version of the MES-01, which has sold more than 2,500 units with space heater control and visualization of temperature, humidity and other measurement items. The use of a high-performance digital sensor improves the measurement range and the accuracy of temperature and humidity readings, and the space heater control operation settings can be changed with switches on the main unit.

Furthermore, the sensor section is designed to be detachable and replaceable, so that accuracy can be maintained by replacing the substrate when the performance deteriorates.

The integrated app is scheduled to be released at the end of March and can be downloaded from Nissin Electric’s website.

The MES-61 is scheduled to go on sale at the end of March, and the company aims to achieve sales of 100 million yen in fiscal 2023 for the multiple environment sensor series.

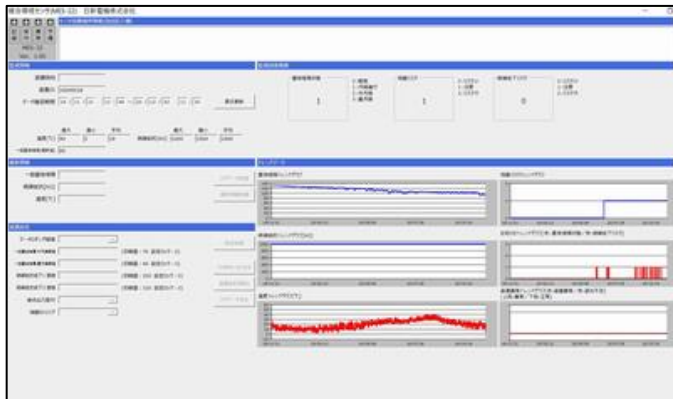
### **[Features of the integrated app]**

1. Capable of displaying the data and controlling the settings of all models in the multiple environment sensor series  
[New function]
2. Primary diagnosis to determine equipment conditions based on aggregated sensing data [New function]
3. Visualization of diagnostic results by computing sensing data using a unique algorithm
4. Capable of outputting screen data in PDF format

### **[Features of MES-61]**

1. Improved temperature and humidity measurement range and enhanced accuracy with new high-performance digital sensor
2. Space heater control operation settings changeable with switches on the main unit
3. Replaceable sensor substrate
4. Twice as many data logging points as the conventional model MES-01

	Conventional model MES-01	New model MES-61
Humidity and temperature sensor	Analog	Digital
Humidity measurement range	30 to 95%RH	0 to 100%RH
Sensor section detachment/replacement	Not possible	Possible
Measurement items	Temperature, humidity and salinity adhesion	Temperature, humidity and insulation resistance
Number of logging points	20,000	40,000
Method of space heater setting change	Dedicated software	Switches on the main unit



the integrated app



MES61

The Nissin Electric Group has been stepping up its efforts to promote the SDGs through its business operations. This accomplishment is related to the following goals among the 17 SDGs.  
 9. Industry, Innovation and Infrastructure